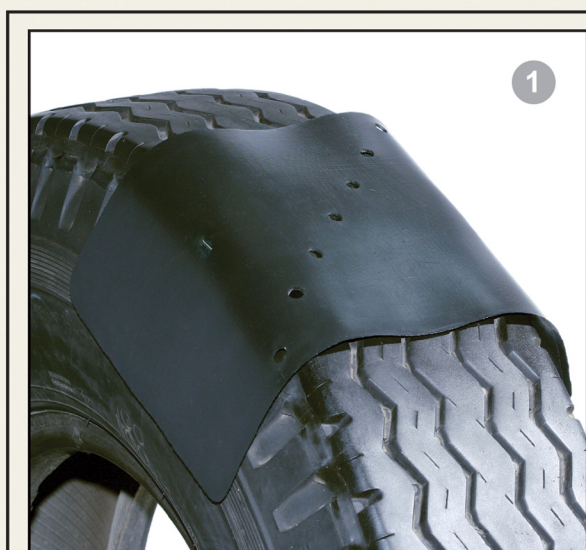


**NEW  
PRODUCT**

## **WICK PAD** (vacuum pad for retreading processes)



Place Wick Pad on the opposite side of the tread joint and far from repaired areas. Adjust it to tyre shoulder.



Centre cloth over Wick Pad. Adjust it to tyre shoulder.

### ADVANTAGES AND RESTRICTIONS

#### ADVANTAGES:

- ▶ Does not need lubrication.
- ▶ Replaces plastic film.
- ▶ Simplifies process.
- ▶ Long-lasting.

#### RESTRICTIONS:

- ▶ Only to be used in autoclaves with Differential Pressure Systems.

### PRODUCT PRESENTATION

Box containing 12 units.  
Available sizes: 22 x 35 cm / 22 x 42 cm / 22 x 125 cm